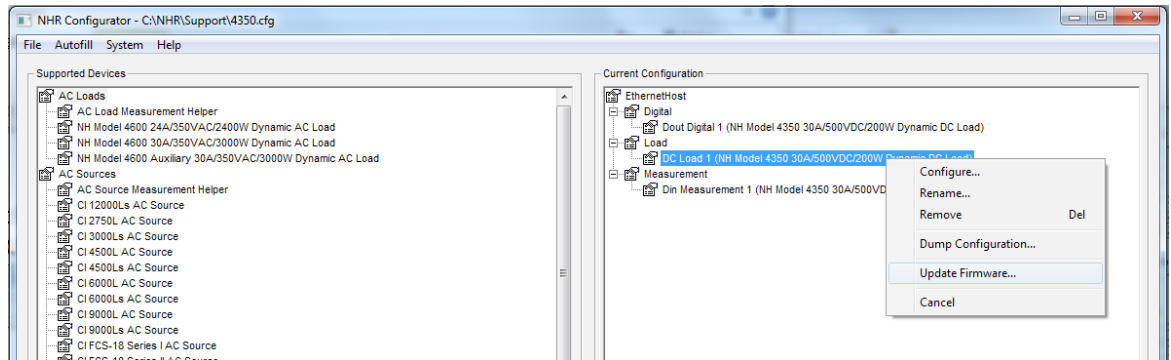


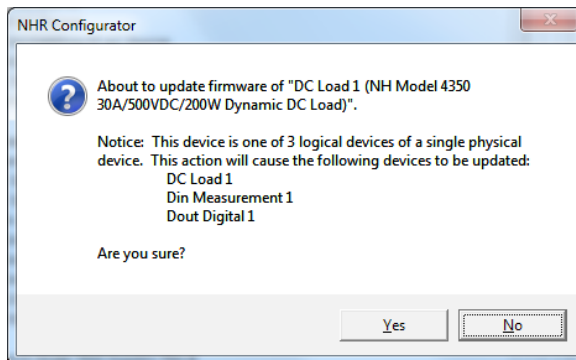
Model 4350 DC Load Firmware Update

Update DSP Firmware

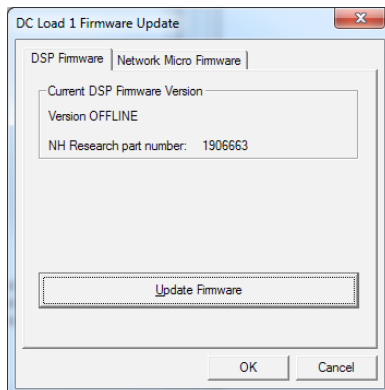
1. Turn on the load and launch the System Configurator.
2. Select and right click on “DC Load 1” then select Update Firmware...



3. Click Yes to proceed.



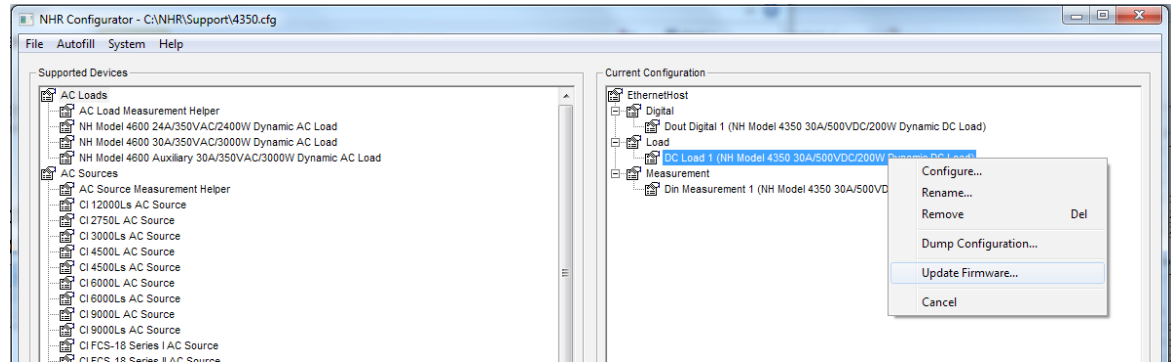
4. Select DSP Firmware tab and click Update firmware.



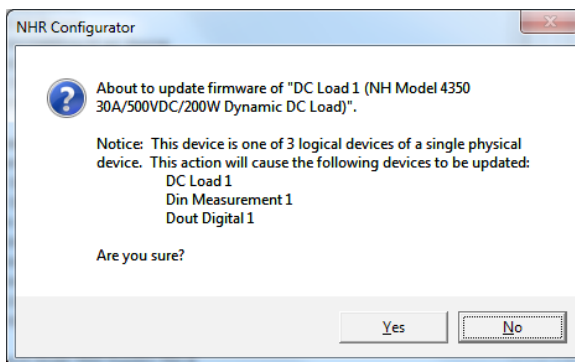
5. Navigate to where the firmware is located, select the file “I906663_L43XX_Vx_xxx.hex” and click Open then wait for the update to complete.

Update NB Firmware

1. Select and right click on Load 1 then select Update Firmware...

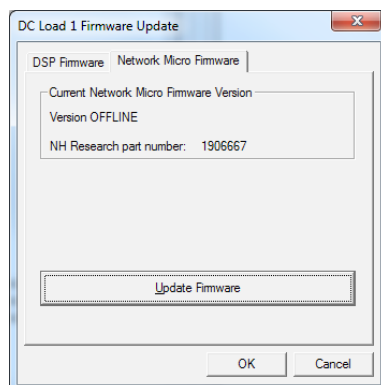


2. Click Yes to proceed.



3. Select Network Micro Firmware tab and click Update firmware.

4. Navigate to where the firmware is located, select the file "C4300NB_Ver_x_xxx_APP.s19" and click Open then wait for the update to complete.



5. Exit System Configurator.

6. Cycle power to the load for the update to take effect.

Contact NH Research for more information or to discuss your testing needs



16601 Hale Avenue, Irvine, California 92606
Tel: 949-474-3900
E-mail: sales@nhresearch.com

www.nhresearch.com

©Copyright 2014, NH Research Incorporated. Pub. 05-29-14 JC
All rights reserved. Specifications subject to change without notice.